

Martin Luther King, Jr. Drive at US 52 Northbound Ramps

2015 Traffic Conditions

40 No Build Option

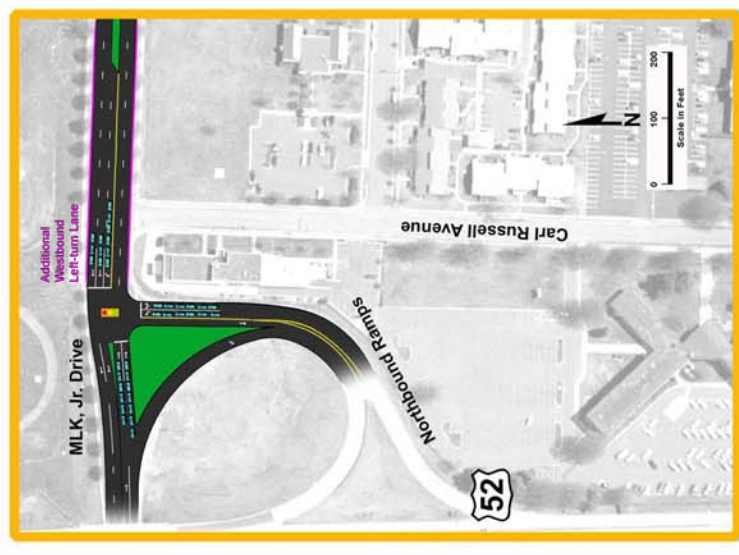


Existing Roadway Network

40 Fully Closed (2 Year Option)



Without Intersection Improvements



With Intersection Improvements

40 Partially Closed (6 Year Option)

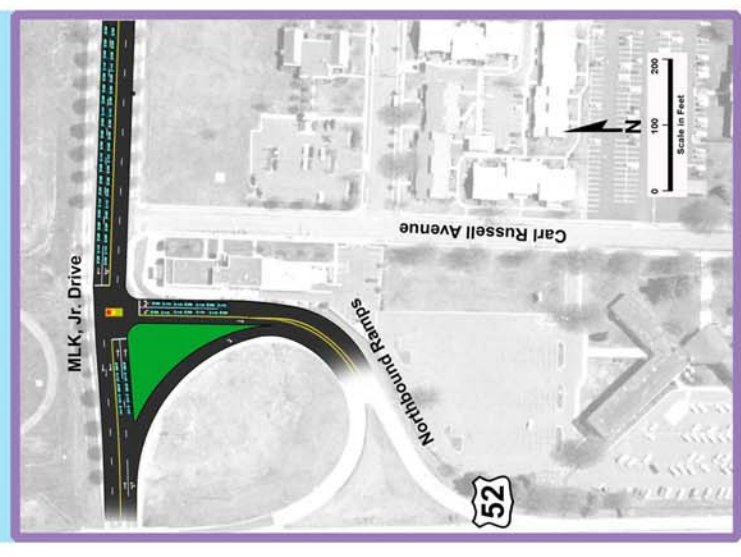


Without Intersection Improvements

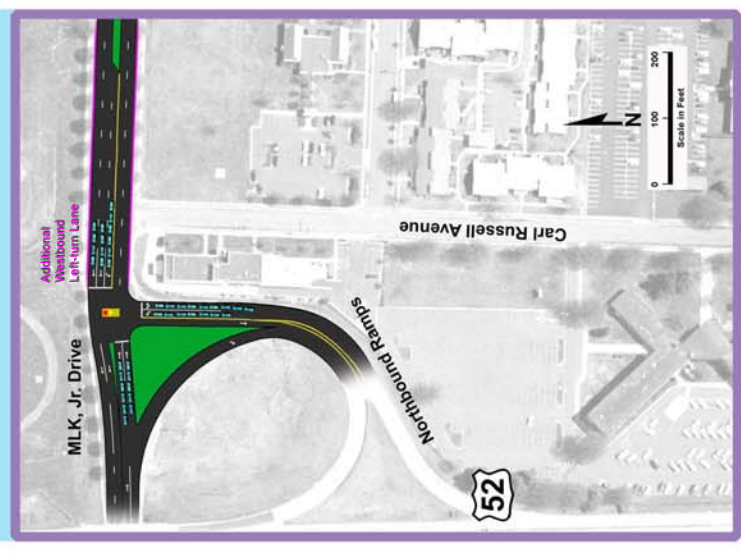


With Intersection Improvements

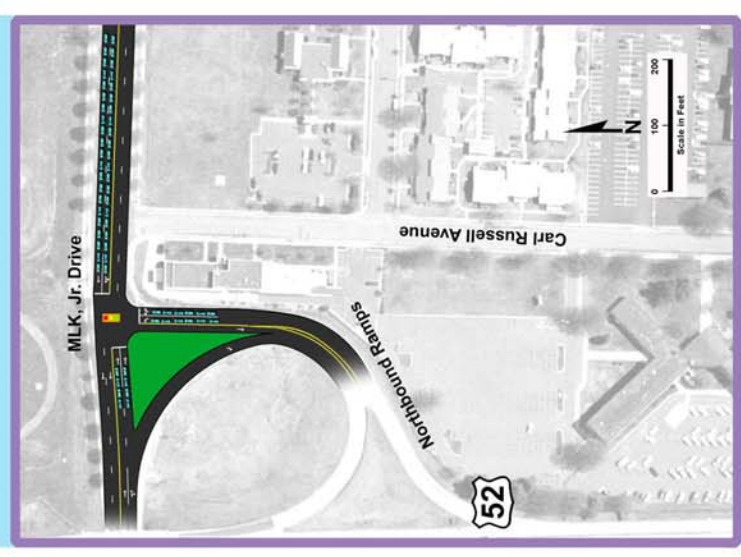
PM Peak Hour



Without Intersection Improvements



With Intersection Improvements



Without Intersection Improvements



With Intersection Improvements